

good machine

Who we are

1. Context
2. Our Solution
3. Theory of Change
4. Technical Expertise
5. Core Team

What we do

1. Services
2. Collaborations
3. Partnerships
4. Our Companies
5. Global Spotlight
6. Investments

Global communities are **increasingly vulnerable.**

Pollution



Food Insecurity



Natural Disasters

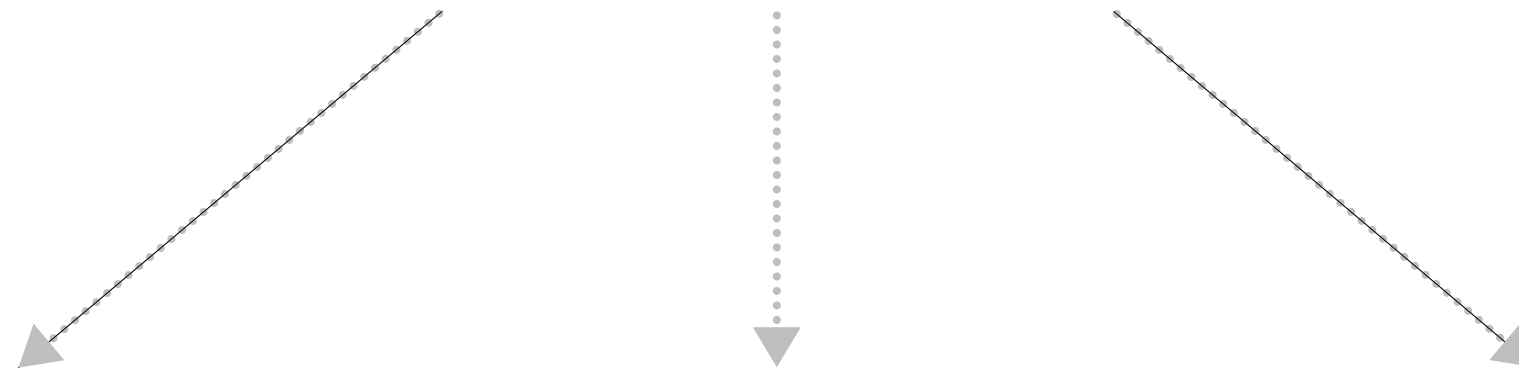


Alone, traditional venture development and philanthropic efforts cannot innovate and scale fast enough to meet **sustainable development needs.**

Our solution:

good machine

Community-driven venture development for rapidly scalable impact in climate and livelihoods.



1

Reduce time-to-market by parallel processing **prototyping and commercialization.**

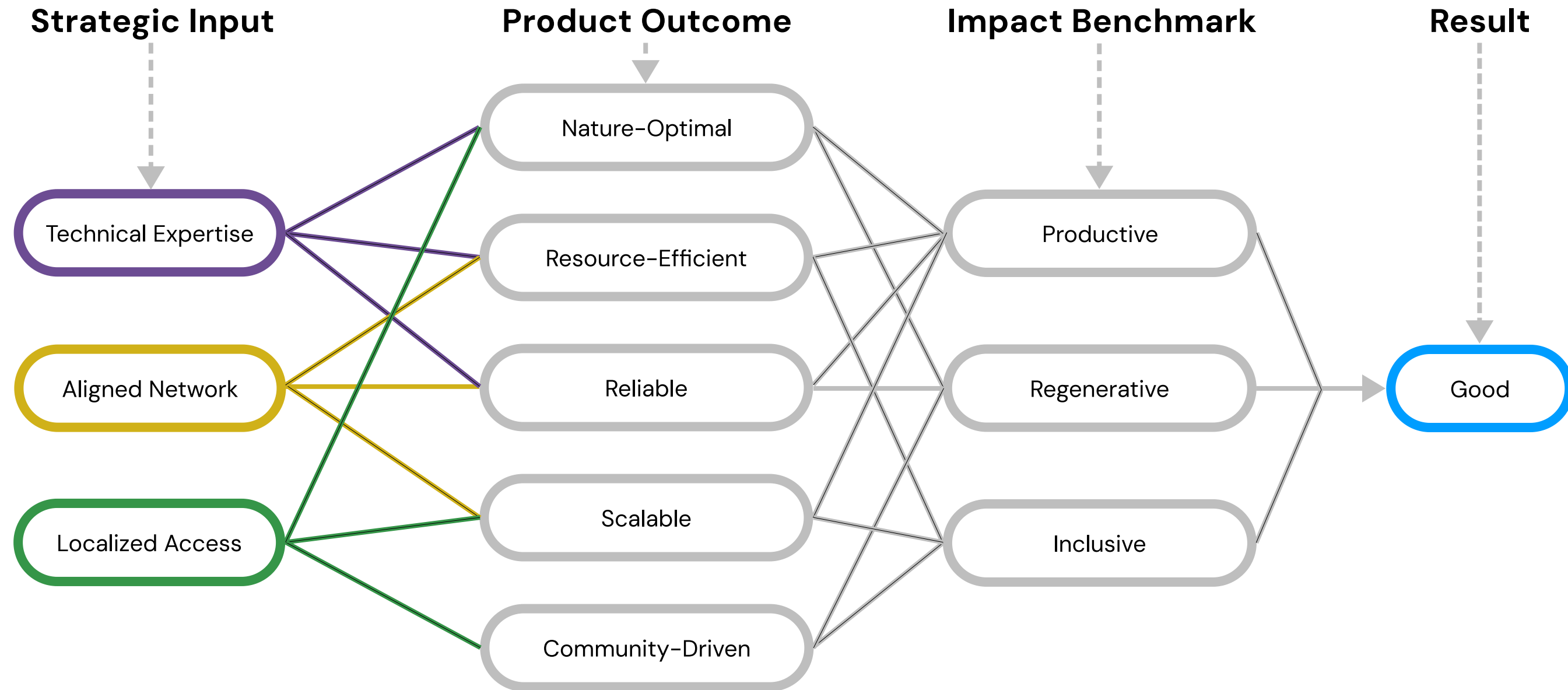
2

Reimagine and redeploy proven technology based on development needs.

3

Scale and magnify with impactful capital after product-market fit.

Theory of Change



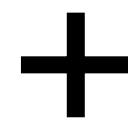
Driving global regeneration by deploying high-impact technology in emerging markets.

Technical Expertise

Our San Francisco, CA, studio attracts & develops expertise spanning...

- Rapid prototyping
- Technology commercialization
- IoT and data collection systems
- Robotics and automation
- Hardware for emerging markets
- Facility planning and design
- Vertically-integrated manufacturing
- Ecosocial project development
- Government relations
- Nature-based solutions

Agile yet scalable
development of high-
impact products



Industry-wide
networks for reliable
results and adoption



Core Team

A Good Machine starts with good people

DAVID SOLOMON, CEO & FOUNDER



David is a lifelong inventor and entrepreneur with over two decades of experience developing and implementing tech-based solutions to achieve quick, low-cost results in frontier markets.

JEN COLE, VICE PRESIDENT



Jen has extensive experience in sustainability consulting, including technological and operational advances for ESG impact. Her past clients include Target Corp., David & Lucille Packard Foundation, USAID.

TOM CHI, PARTNER & HEAD OF PRODUCT



Tom has pioneered rapid prototyping concepts that led to 75 patents and innovative processes utilized by over a dozen industry-leading companies. Previously co-founder & Head of Product Experience at Google X.

MARTINE NEIDER, OPERATIONS & STRATEGY



Martine is an expert in operations, efficiency, vertically-integrated manufacturing, and supply chain management. Previously part of SF Made, Other Machine Co., Otherlab and Makani Power.

Core Team

A Good Machine starts with good people

ZACH RADDING, ENGINEER



Zach has worked on embedded electronics and mechanical design since 2001, advancing numerous scientific and product design projects under the consultancy Build Cool Stuff.

MAX KONSTANTINOVSKY, ENTREPRENEUR



EIR with 8 years of experience leading eco-social initiatives. Max specializes in business strategy, technology commercialization and corporate development. Venture impact advisor for Cognic Capital.

DAG SYRRIST, BOARD MEMBER



Dag has a broad range of venture, fund management, business development, public policy, and regulatory experience accumulated over more than 30 years in U.S. and EU venture industries.

LOUISE HILSEN, BOARD MEMBER



Louise is a veteran legislative strategist with 25+ years of professional experience, from senior positions on Capitol Hill to working with governments and civil society towards accountability in supply chains.



Services

We help the ecosocial ecosystem scale faster by advising companies in emerging markets on prototyping, technology development, and Design for Manufacturing (DFM).

Direct Venture Support

- We help companies address primary bottlenecks in design, iteration, fundraising, market strategy, manufacturing, and deployment, ensuring continued product improvements.

Local Makerspace Buildout

- Leveraging extensive shop and lab-building experience, Good Machine is an expert at planning, programming and equipping solution-oriented spaces for local community development.

Innovation Fellowships

- Mentorship for rising social and climate impact entrepreneurs through Good Machine and our industry-wide network.

Collaborations

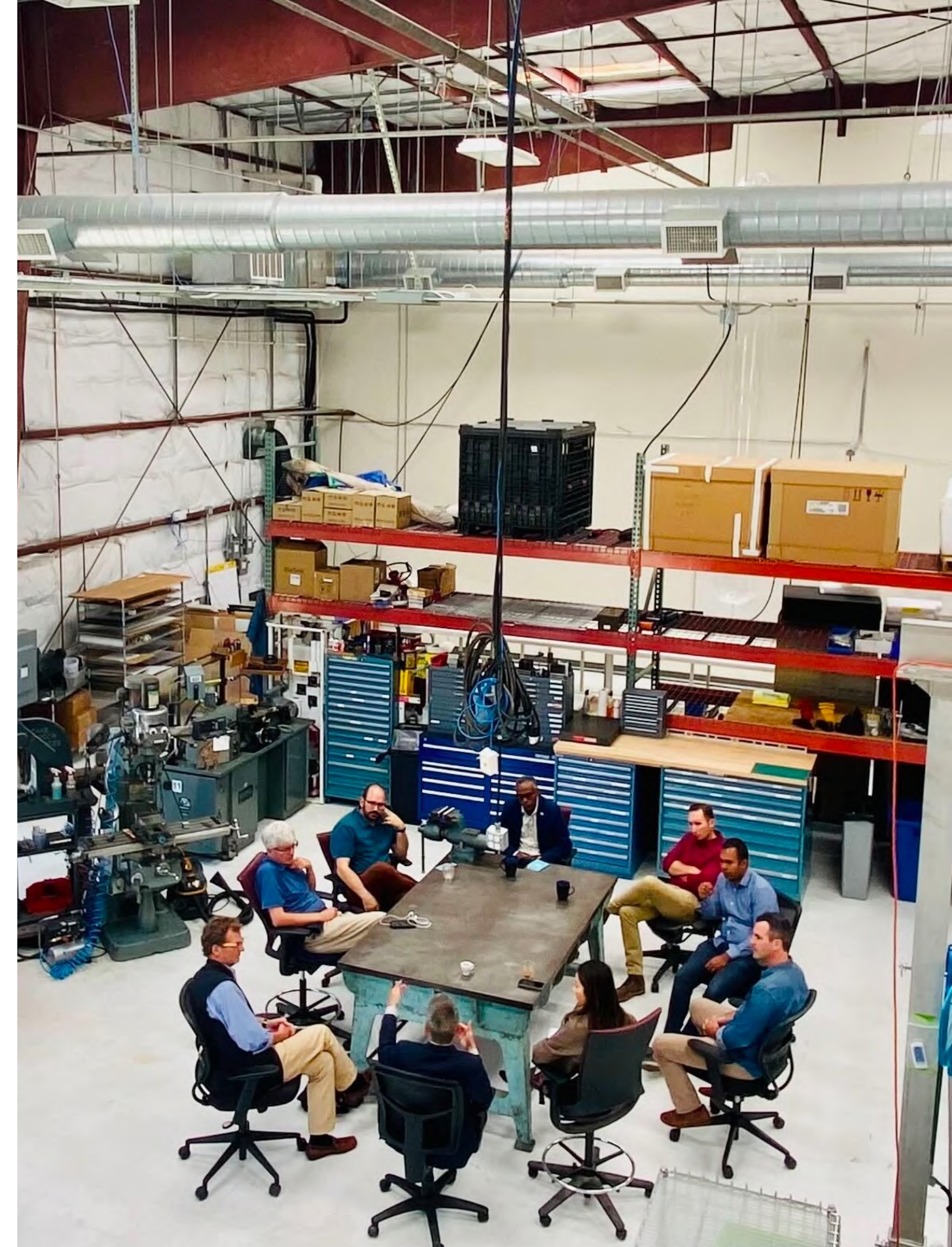
Good Machine partners with startups and incumbents on specific projects or initiatives. For example, to develop and launch a new product or explore a new market opportunity.

Joint Prototyping

→ We prototype solutions where needed, sharing capacity for joint R&D projects and acting as a 'skunkworks' for good innovation technology. Our focus is solving the problem and future-proofing solution deployment.

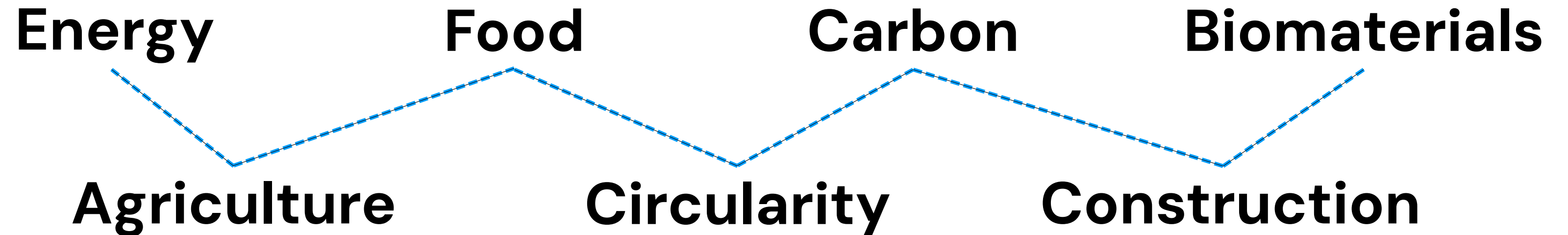
Localized Impact

→ We partner with local organizations and companies for shared impact through grants and product MOUs, working in partnership to deploy solutions in key regions or fields of interest.



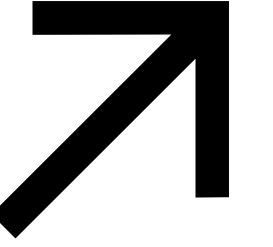
Global Reach

In addition to our 8 up-and-running companies, Good Machine used innovative financing mechanisms in partnership with JLL Foundation to fund 23 early-stage impact-driven startups in



Good Machine has partners on all continents and works in 45 different countries, including...

Barbados • Costa Rica • Dominican Republic • India • Indonesia • Kenya • Malaysia • Mexico • Morocco • Nigeria • Singapore • South Sudan • Tanzania • Timor Leste • Ukraine • USA



Investments

Food & Agriculture

Agsol

Providing agro-processing machinery and scalable energy access solutions to off-grid farming communities across the world.

Forested

Regenerative ingredient sourcing partners to brands committed to a climate-neutral, nature-positive, and socially-just world.



Product



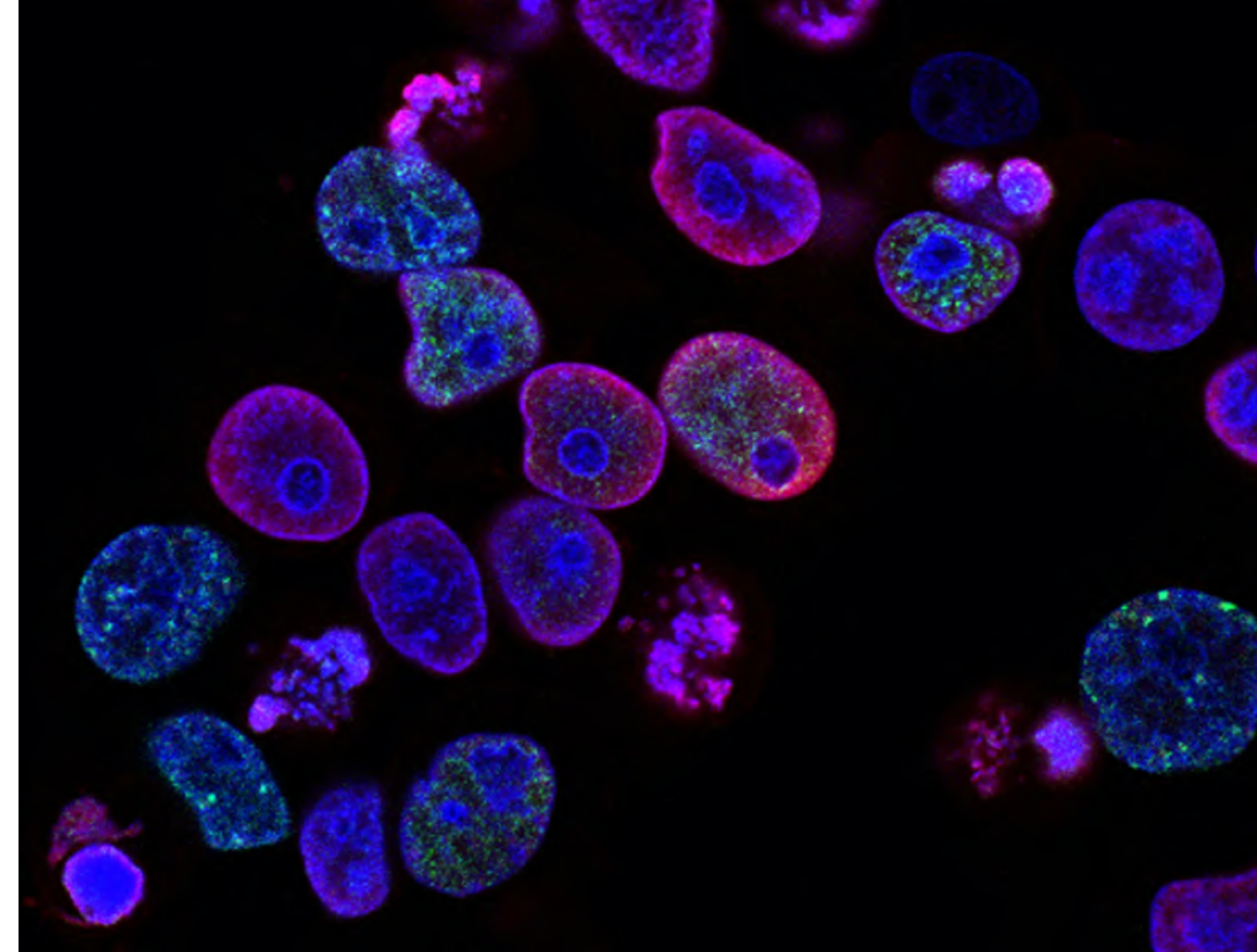
Food & Agriculture

Malibu Mylk

Organic milk made from unstrained, whole-ground flaxseed, requiring only natural rainfall.

NovoNutrients

Fermentation platform transforming emissions into complete single cell protein ingredients for food and feed.



Circularity

Re:Dish

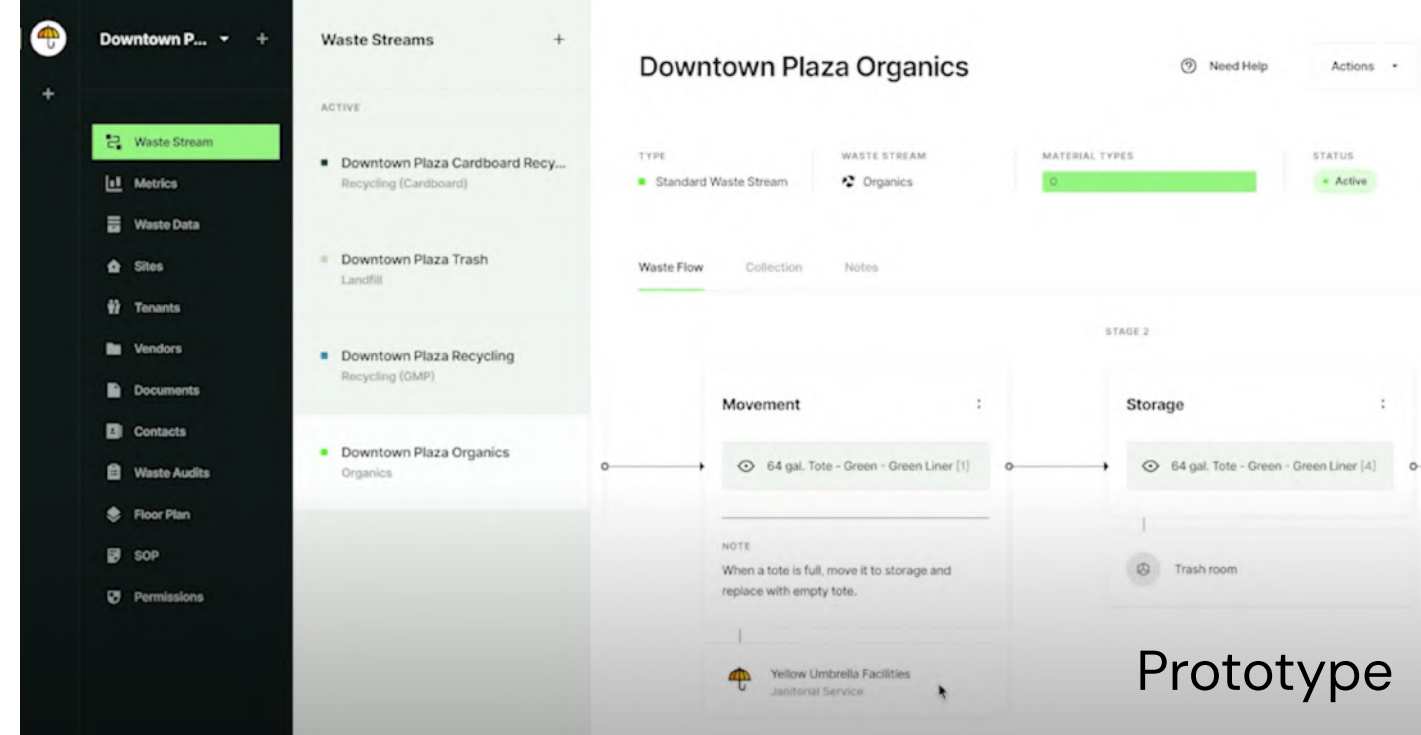
Reuse-as-a-service tackling single-use waste in food service through product, logistics and support for large-scale operators.



Product

WATS

Woman-owned waste administration and tracking software guiding business operators, facilities managers, and sustainability teams.



Prototype

LimeLoop

Reusable packaging power by smart technology for efficient, economical, and environmentally friendly supply chains.



Product

Circularity

Biorestore

Patent-pending home laundry Re-Tergent that renews, revives and restores old & worn clothing to new.

CIRT

Real-time location-specific product recovery platform backed by the world's first centralized database of wastesheds, materials, and products.

NETZRO

Food upcycling platform providing smart technology, sustainable processes and safe, healthy upcycled ingredients at scale.



Construction

Hydronic Shell

Modular HVAC and facade system for deep retrofits at scale. Transforming buildings for a net zero future.

RedWorks

Technology to make masonry on-site with the dirt beneath your feet. A greener and cheaper way to build.

Kubik

Turning plastic waste into safe, durable, affordable low-carbon buildings.



Construction

BabylonGardens

Innovation lab designing solutions for green walls, green roofs and urban spaces.



Kit Switch

Modular interiors to create the homes we need with the buildings we have.



Get Weatherized

Reducing emissions from residential heating and cooling with modern software for insulation contractors.



Biomaterials

Folia Materials

Sustainable paper as a super material. Patented nanoscience using existing machinery to manufacture sustainable consumer goods.

Minus Materials

Carbon-negative biogenic limestone for the cement and concrete industry. Shortening the formation of limestone quarries from millennia to minutes.



Biomaterials

Slow Factory Labs

All-natural, plant-based alternative to animal leather, made from a waste-to-resource regenerative supply chain.

Carbonwave

Seaweed biorefinery turning Sargassum into materials that can restore soils and oceans, eliminate micro-plastic waste, and achieve carbon neutrality.



Prototype



Product

Energy & Carbon Management

GoPowerEV

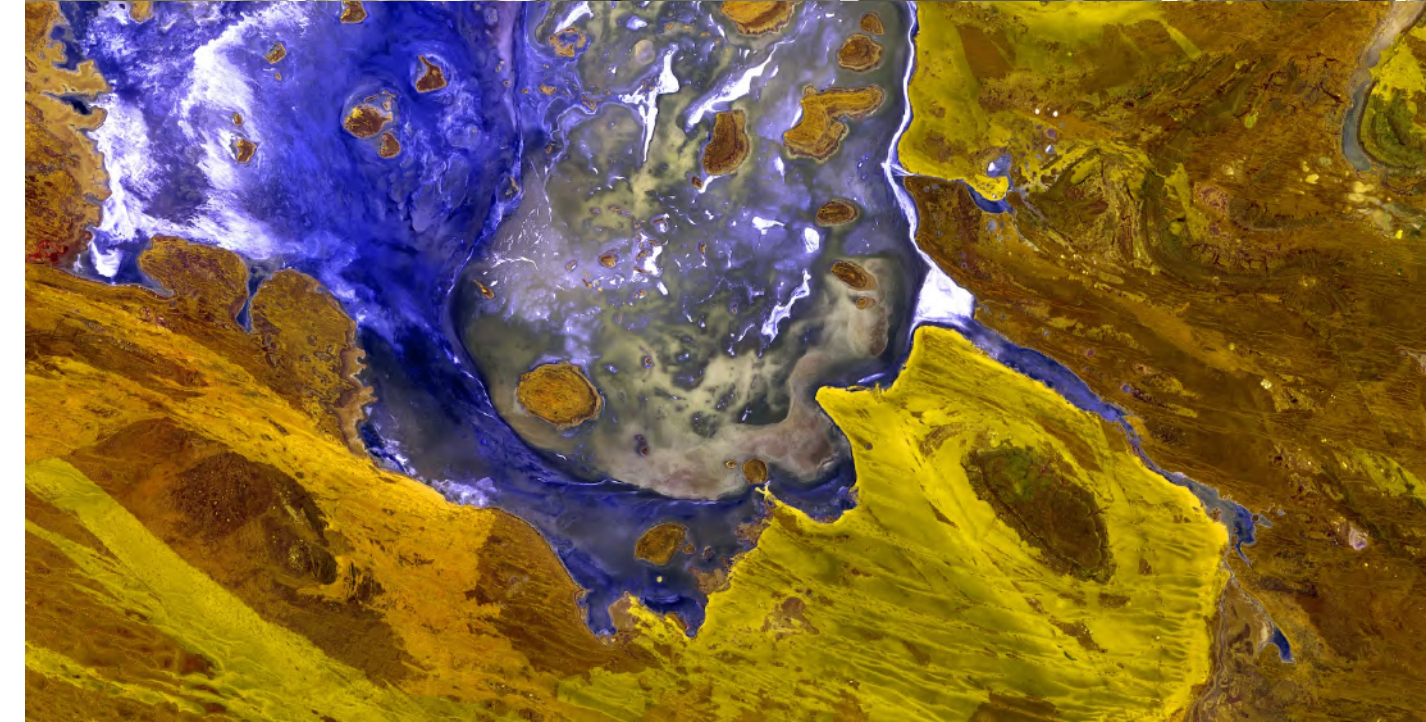
Affordable, hassle-free charging solution for property owners and residents. Equitable access to EV charging no matter where you live.

Tangible

Tracks, manages, and reports embodied carbon in building materials across real estate development portfolios.

15Rock

Global leader in climate risk management and advisory services. Employing years of experience trading and risk/valuation at global financial institutions.



David Solomon
Jen Cole

dave@goodmachine.studio
jen@goodmachine.studio

Thank You